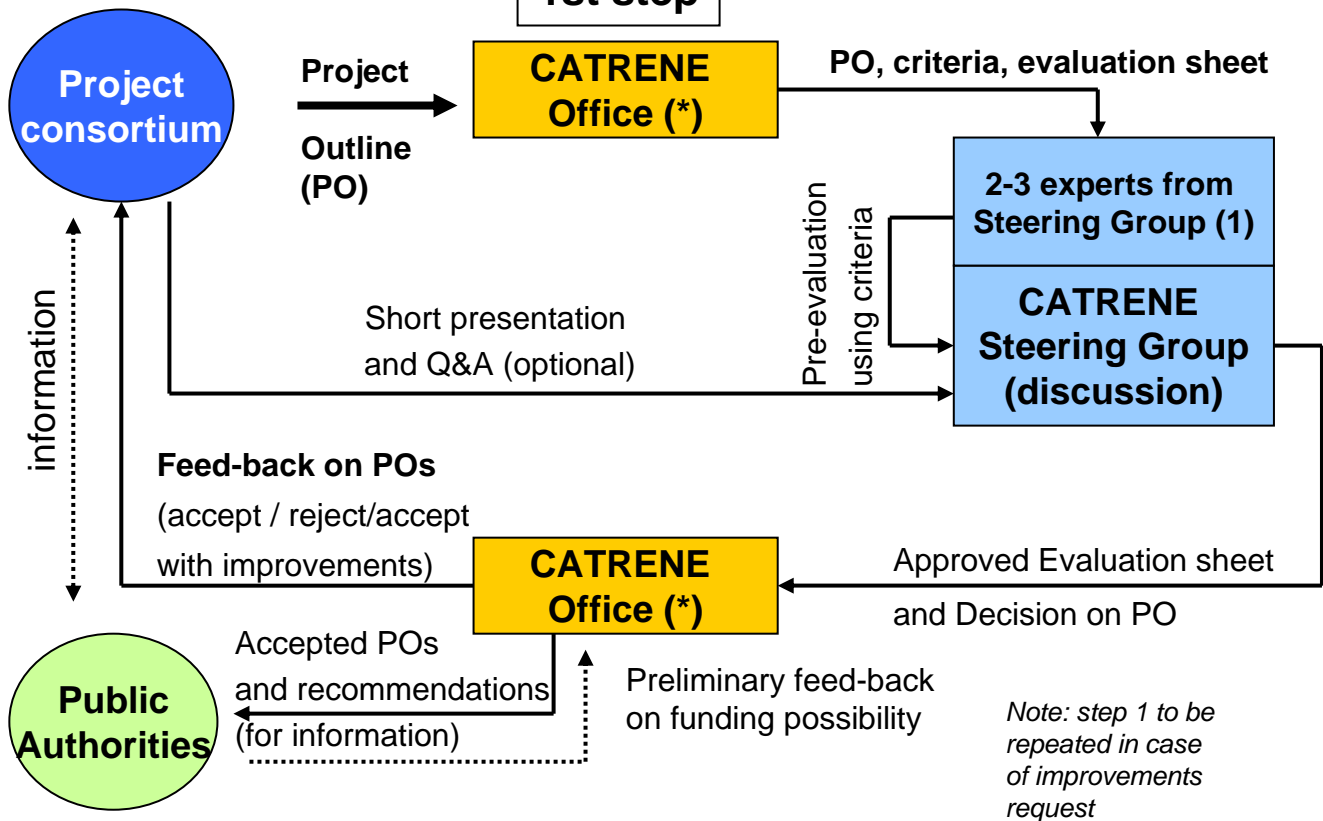
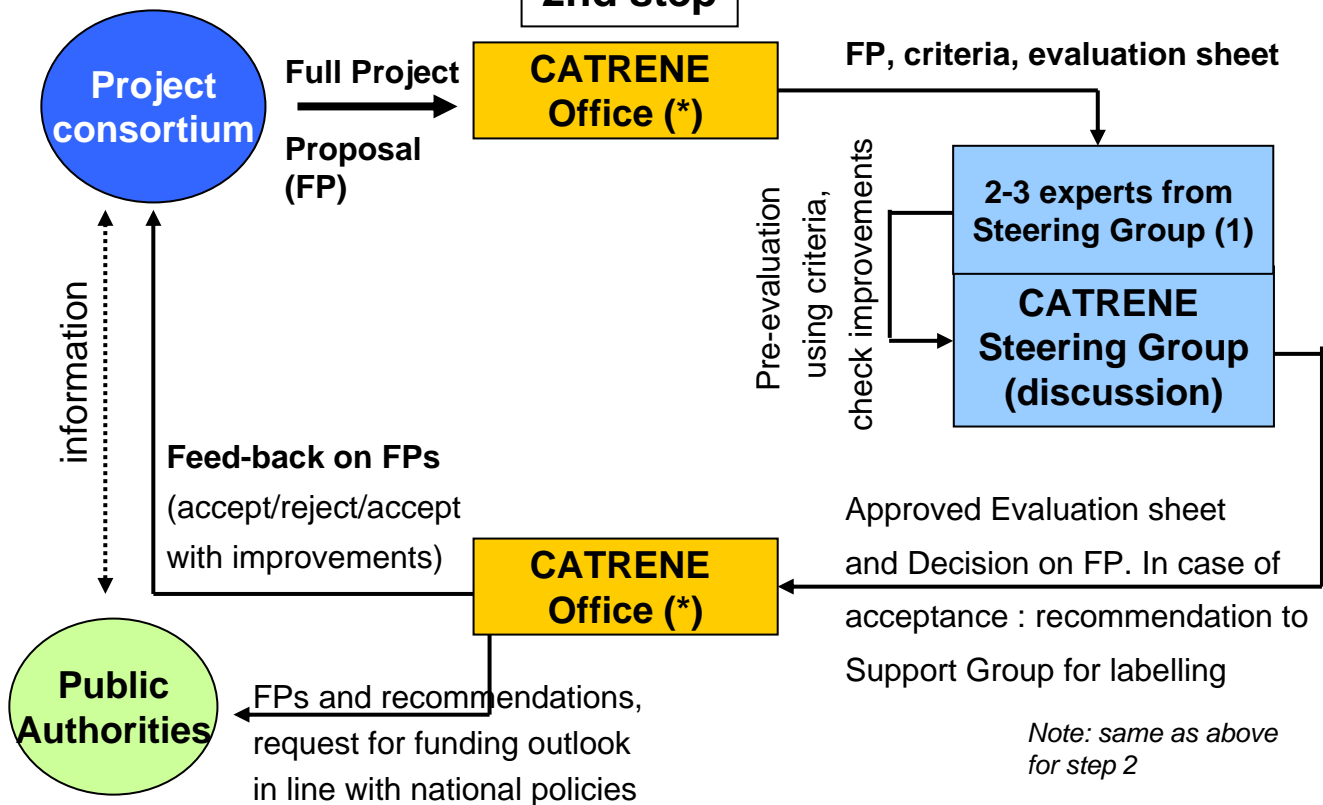


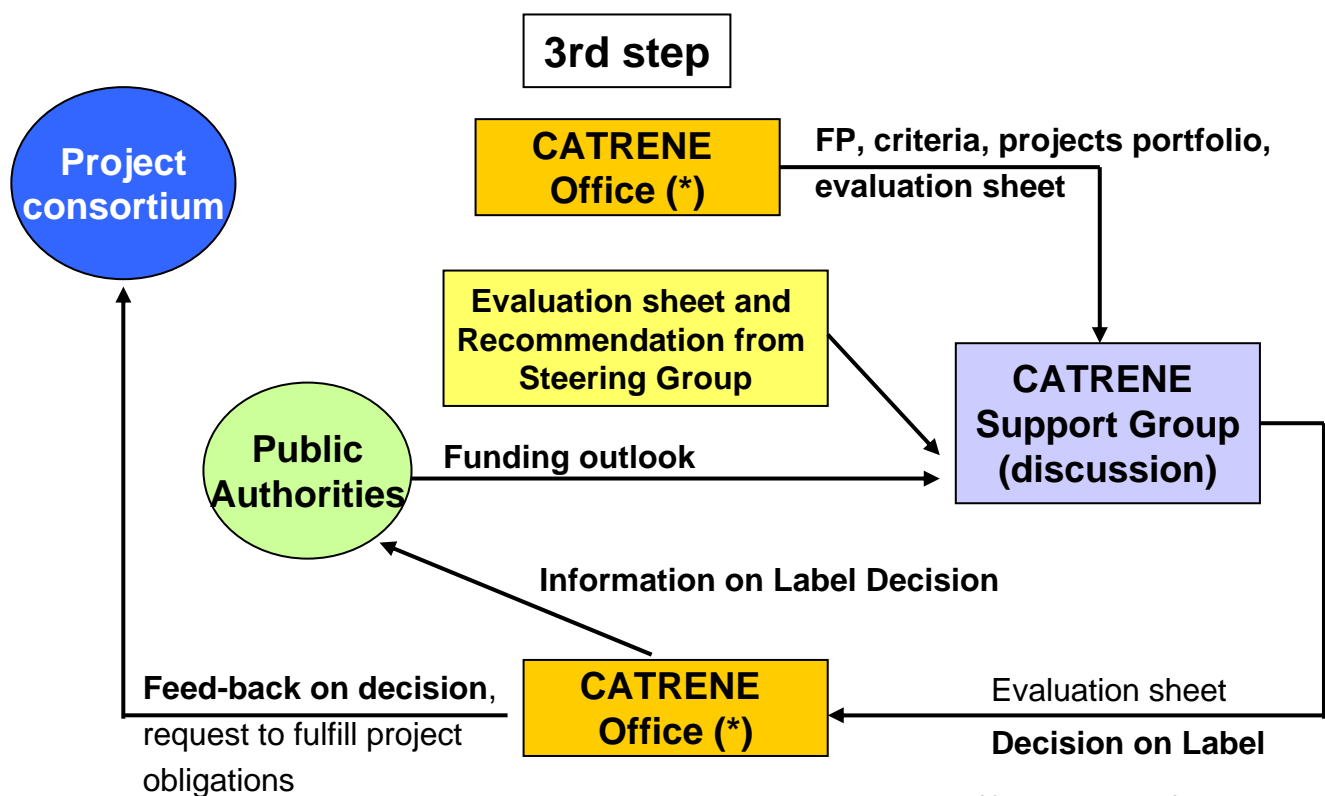
# CATRENE project selection process

## 1st step

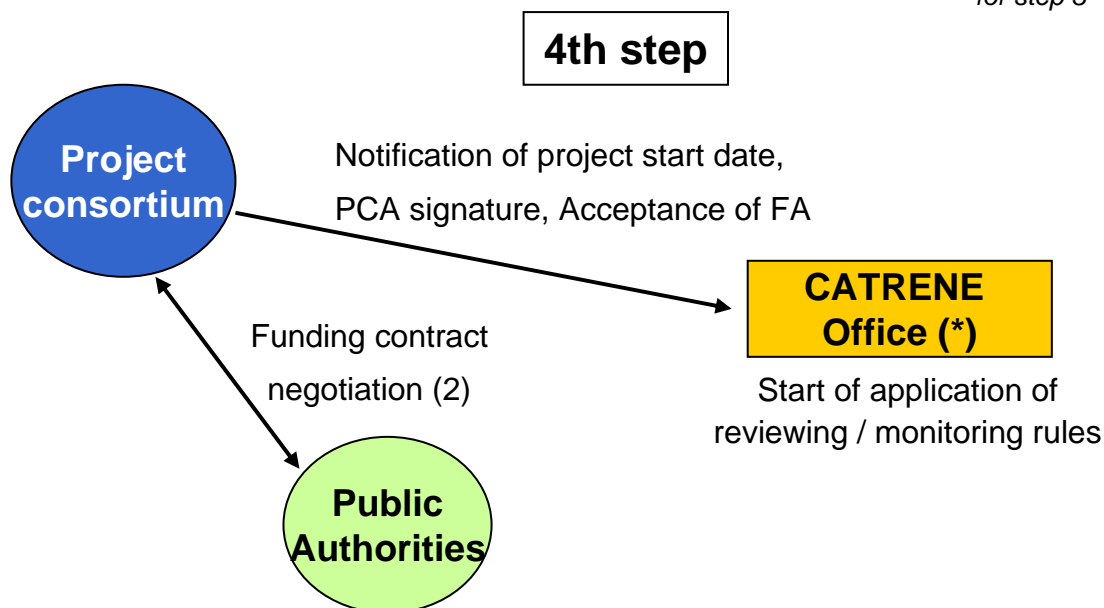


## 2nd step





*Note: same as above for step 3*



(\*) CATRENE Office responsibility: check of formalities, fulfillment of duties, compliance to rules, classification in work areas according to White-Book

(1) experts' organisations must not be involved in the project evaluated

(2) can start earlier in certain countries. Consortia partners are invited to start informing their respective PAs at the earliest stages of the process